



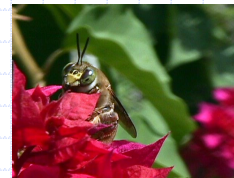
Centris bees as pollinators of tropical crops: the cases of cashew and West Indian cherry

April 2004



Workshop on Solitary Bees: Conservation, Rearing and Management for Pollination

Beberibe, Ceará April 26-30, 2004



Introduction



Introduction



Introduction



Introduction



Introduction

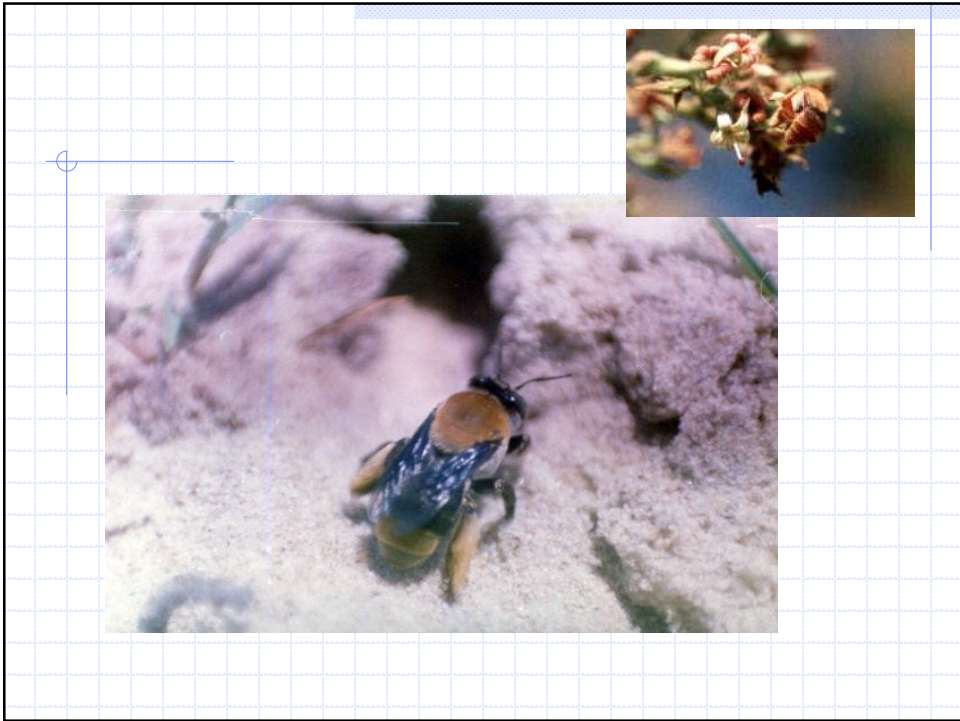
If

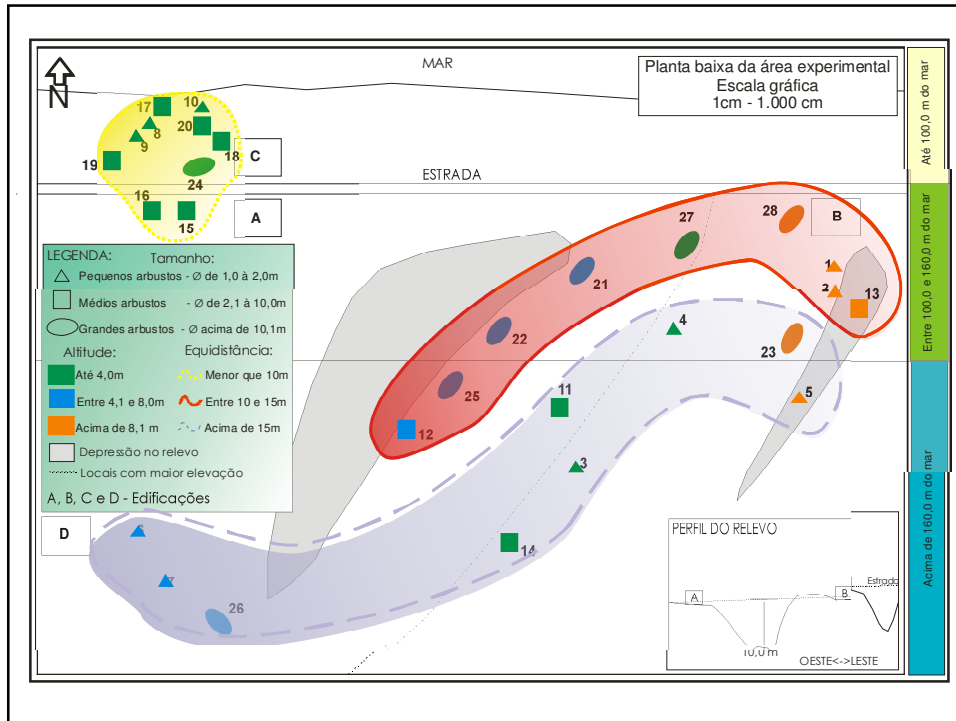
Cashew is native to Brazil;

***Apis* is an exotic species imported into Brazil
less than 150 years ago;**

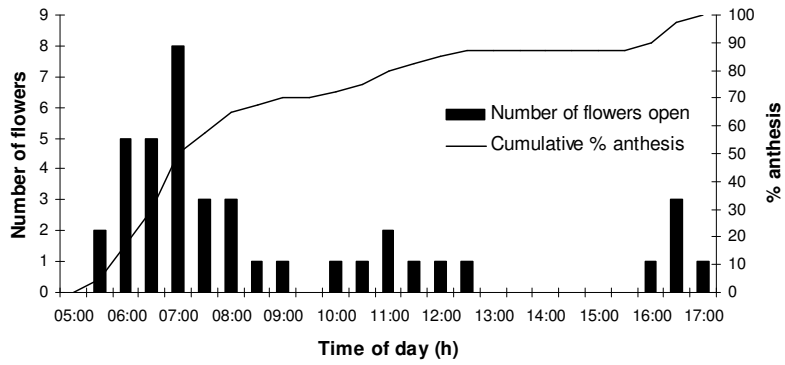
WHO POLLINATED CASHEW BEFORE *Apis*?



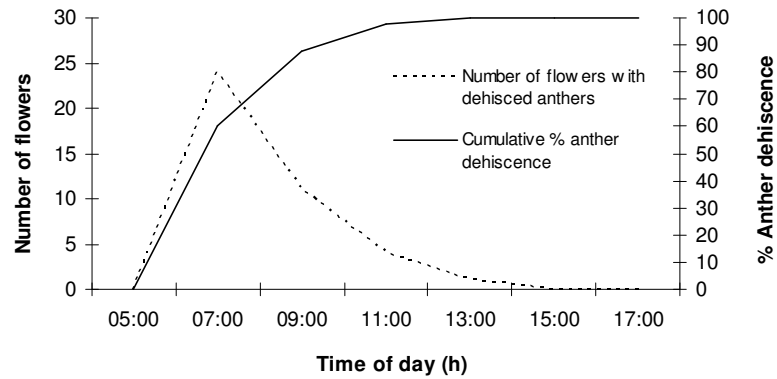




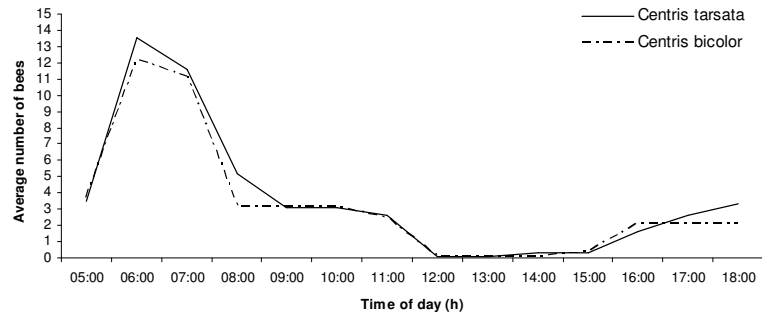
Byrsonima crassifolia – Anthesis pattern



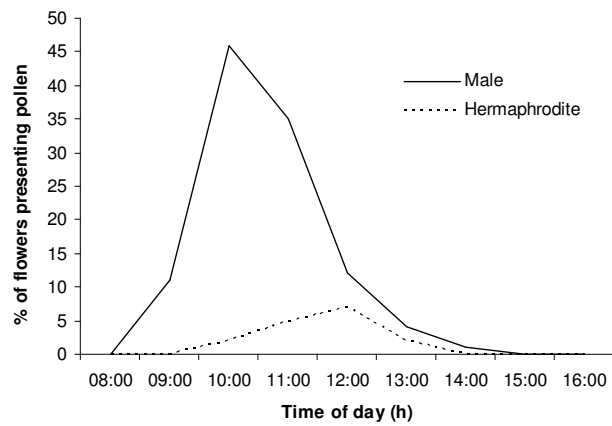
Byrsonima crassifolia – Pollen presentation



Byrsonima crassifolia – Bee foraging pattern



Anacardium occidentale – Pollen presentation



Centris tarsata foraging pattern in cashew and nance flowers

